

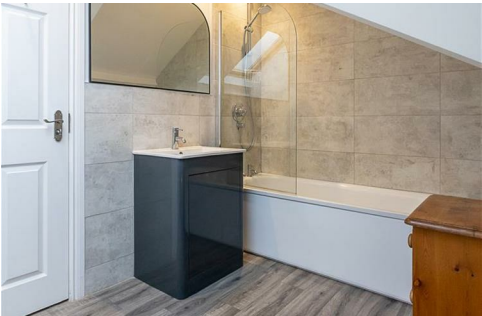
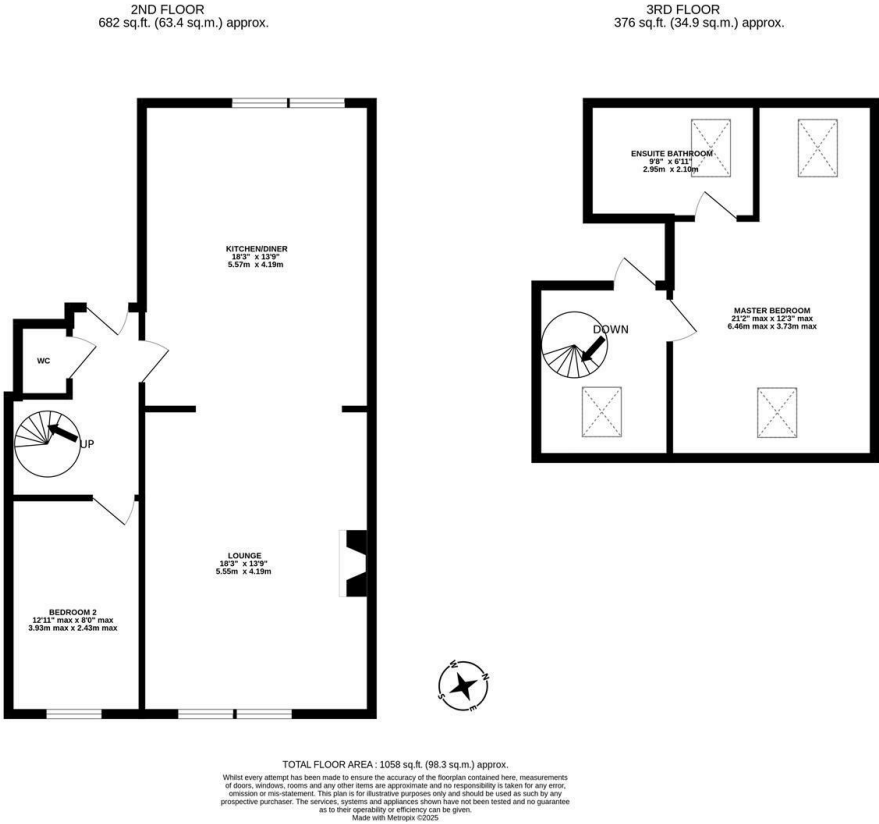


****AVAILABLE MARCH 2026** **TOP FLOOR DUPLEX APARTMENT** **FURNISHED**** Set behind communal gardens sits a stunning, recently refurbished duplex apartment, occupying the 2nd and 3rd floors of this imposing Victorian conversion which is ideally situated on the corner of Osborne Road and Lily Avenue, Jesmond. Perfectly placed for convenient access to all Jesmond has to offer, including its countless great shops, cafés, restaurants as well excellent transport links into the city and beyond with West Jesmond Metro Station only a short walk away.

Very well presented, the accommodation briefly comprises; communal entrance with stairs to all floors; private entrance at 2nd floor level through into private entrance hall with W/C and spiral staircase to 2nd floor; kitchen/diner, with bespoke fitted kitchen, integrated appliances and wood flooring, open plan to an 18ft lounge with spot-lighting and boasting a wall mounted 65" TV; bedroom two, accessed via the hallway is a comfortable double; the 2nd floor hosts a small landing with door leading back down into communal hallway, also provides access to the master bedroom. A large 21ft double room, with exposed wood beams, wall mounted TV, kingsize bed and benefiting from an en-suite bathroom WC. Externally there are communal gardens to the front and an allocated parking space to the rear providing off street parking. With gas 'Combi' central heating and double glazed windows, this conversion apartment perfectly suits a professional couple or single occupant and simply demands an early inspection!

Available 13th March 2026 | £1,650pcm | Furnished | Top Floor Duplex Apartment | 1,058 Sq ft (98.3m2) | Two Double Bedrooms | 2nd & 3rd Floor Maisonette | Modern Kitchen/Diner | Open Plan Lounge | En-Suite Bathroom | Separate WC | Excellent Location | Allocated Off Street Parking | GCH & DG | Council Tax Band: B | EPC Rating: C

£1,650 PCM



IMPORTANT NOTE: These particulars and the descriptions and measurements herein do not constitute representation and whilst every effort has been made to ensure accuracy, this cannot be guaranteed.

